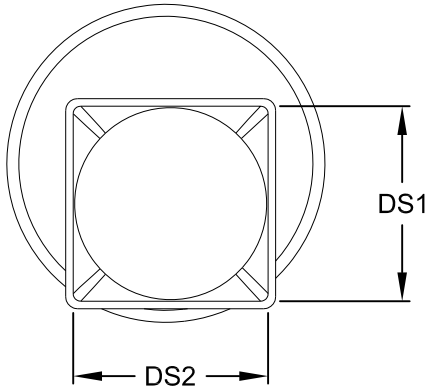
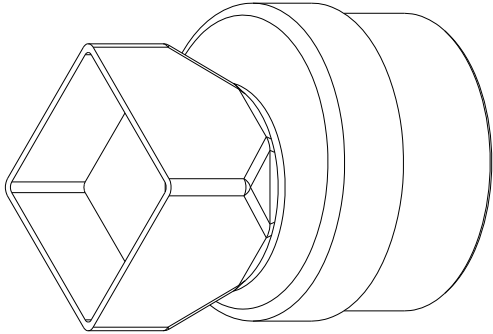
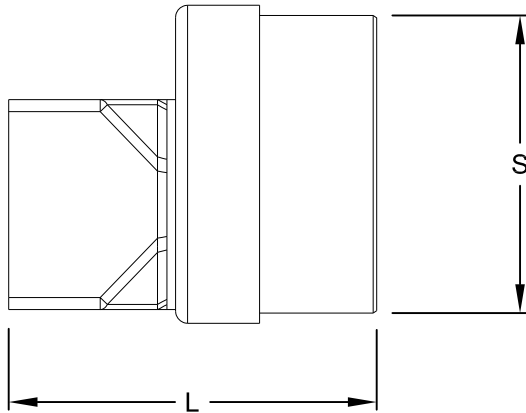


REVISIONS			
REV	DESCRIPTION	DATE	APPROVED



Nominal Size	Part Number	L	S	DS1	DS2
4x4x6	01026	7.2	6.3	4.0	4.0
6x6x8	01179	10.2	8.4	6.0	6.0
8x8x10	NS	15.5	10.5	8.0	8.0
8x8x12	NS	16.5	12.5	8.0	8.0

Dimensions are approximate due to various factors affecting production. Dimensions are subject to change without notice due to design or production modifications. Unless otherwise specified, socket bottom to socket bottom dimensions are to be +/-1/2". Overall length dimensions are to be +/-1". All fitting angles are to be +/-1 degree. Outside dimensions are to be +/-1/4".

This print discloses subject matter in which Macon Plastics has proprietary rights. This drawing was originated by and is the exclusive property of Macon Plastics. It is furnished for recipient's information only and is not an authorization or license to make this construction or furnish this information to others.



Macon Plastics <small>PO Box 6491 Macon, GA 31206 888.782.2722</small>			
Offset Downspout Adapter DS X 3034 Male			
<small>DRAWN BY</small> MB	<small>SIZE</small> A	<small>DWG NO.</small> SSWR-S-OFFDS3034M-15-001	<small>REV</small>
<small>APPROVED BY</small> JW	<small>SCALE</small> NTS	<small>DATE</small> 04/29/2015	<small>SHEET</small> 1 OF 1